



Crompton Primary School

Admission Arrangements

| | |
|---------------------------|----------------|
| Date written | September 2023 |
| Date of review | December 2024 |
| Headteacher | Mrs G Croston |
| Chair of Governors | Mrs L Dowd |

Contents

| | |
|--|----|
| 1. Aims..... | 3 |
| 2. Legislation and statutory responsibilities..... | 3 |
| 3. Roles and responsibilities | 3 |
| 4. Equal opportunities | 5 |
| 5. Being notified that a child has a medical condition | 5 |
| 6. Individual healthcare plans | 5 |
| 7. Managing medicines..... | 6 |
| 8. Emergency procedures..... | 8 |
| 9. Training..... | 8 |
| 10. Record keeping..... | 9 |
| 11. Liability and indemnity | 9 |
| 12. Complaints | 9 |
| 13. Monitoring arrangements..... | 9 |
| 14. Links to other policies | 10 |
| Appendix 1: Being notified a child has a medical condition | 11 |

1. Aims

This policy aims to ensure that:

- Pupils, staff and parents understand how our school will support pupils with medical conditions
- Pupils with medical conditions are properly supported to allow them to access the same education as other pupils, including school trips and sporting activities

The governing board will implement this policy by:

- Making sure sufficient staff are suitably trained
- Making staff aware of pupil's condition, where appropriate
- Making sure there are cover arrangements to ensure someone is always available to support pupils with medical conditions
- Providing supply teachers with appropriate information about the policy and relevant pupils
- Developing and monitoring individual healthcare plans (IHPs)

The named person with responsibility for implementing this policy is the Headteacher Mrs G Croston.

2. Legislation and statutory responsibilities

This policy meets the requirements under [Section 100 of the Children and Families Act 2014](#), which places a duty on governing boards to make arrangements for supporting pupils at their school with medical conditions.

It is also based on the Department for Education's statutory guidance: [Supporting pupils at school with medical conditions](#).

3. Roles and responsibilities

3.1 The governing board

The governing board has ultimate responsibility to make arrangements to support pupils with medical conditions. The governing board will ensure that sufficient staff have received suitable training and are competent before they are responsible for supporting children with medical conditions.

3.2 The Head Teacher

The Head Teacher will:

- Make sure all staff are aware of this policy and understand their role in its implementation
- Ensure that there is a sufficient number of trained staff available to implement this policy and deliver against all individual healthcare plans (IHPs), including in contingency and emergency situations

- Take overall responsibility for the development of IHPs
- Make sure that school staff are appropriately insured and aware that they are insured to support pupils in this way
- Contact the school nursing service in the case of any pupil who has a medical condition that may require support at school, but who has not yet been brought to the attention of the school nurse
- Ensure that systems are in place for obtaining information about a child's medical needs and that this information is kept up to date

3.3 Staff

Supporting pupils with medical conditions during school hours is not the sole responsibility of one person. Any member of staff may be asked to provide support to pupils with medical conditions, although they will not be required to do so. This includes the administration of medicines for children with a health care plan.

Those staff who take on the responsibility to support pupils with medical conditions will receive sufficient and suitable training, and will achieve the necessary level of competency before doing so.

Teachers will take into account the needs of pupils with medical conditions that they teach. All staff will know what to do and respond accordingly when they become aware that a pupil with a medical condition needs help.

3.4 Parents

Parents will:

- Provide the school with sufficient and up-to-date information about their child's medical needs
- Be involved in the development and review of their child's health care plan and may be involved in its drafting
- Carry out any action they have agreed to as part of the implementation of the health care plan e.g. provide medicines and equipment

3.5 Pupils

Pupils with medical conditions will often be best placed to provide information about how their condition affects them. Pupils should be fully involved in discussions about their medical support needs and contribute as much as possible to the development of their IHPs. They are also expected to comply with their IHPs.

3.6 School nurses and other healthcare professionals

Our school nursing service will notify the school when a pupil has been identified as having a medical condition that will require support in school. This will be before the pupil starts school, wherever possible.

Healthcare professionals, such as GPs and paediatricians, will liaise with the schools nurses and notify them of any pupils identified as having a medical condition.

4. Equal opportunities

Our school is clear about the need to actively support pupils with medical conditions to participate in school trips and visits, or in sporting activities, and not prevent them from doing so.

The school will consider what reasonable adjustments need to be made to enable these pupils to participate fully and safely on school trips, visits and sporting activities.

Risk assessments will be carried out so that planning arrangements take account of any steps needed to ensure that pupils with medical conditions are included. In doing so, pupils, their parents and any relevant healthcare professionals will be consulted.

5. Being notified that a child has a medical condition

When the school is notified that a pupil has a medical condition, the process outlined below will be followed to decide whether the pupil requires a health or care plan.

The school will make every effort to ensure that arrangements are put into place within 2 weeks, or by the beginning of the relevant term for pupils who are new to our school once information has been received by the parent or medical health care professional.

See Appendix 1.

6. Individual healthcare plans

The Head Teacher has overall responsibility for the development of health care plans for pupils with medical conditions. This has been delegated to the SENCo , Mrs Sam Kershaw and our lead first aid practitioner , Mrs Julie Crossley.

Plans will be reviewed at least annually, or earlier if there is evidence that the pupil's needs have changed.

Plans will be developed with the pupil's best interests in mind and will set out:

- What needs to be done
- When
- By whom

Not all pupils with a medical condition will require a health care plan. It will be agreed with a healthcare professional and the parents when a plan would be inappropriate or disproportionate. This will be based on evidence. If there is not a consensus, the Head Teacher will make the final decision.

Plans will be drawn up in partnership with the school, parents and a relevant healthcare professional, such as the school nurse, specialist or paediatrician, who can best advise on the pupil's specific needs. The pupil will be involved wherever appropriate.

Individual health care plans will be linked to, or become part of, any education, health and care (EHC) plan. If a pupil has special educational needs or disabilities (SEND) but does not have an EHC plan, the SEND will be mentioned in the individual healthcare plan.

The level of detail in the health care plan will depend on the complexity of the child's condition and how much support is needed. Health care professionals will be consulted to support with what information should be included in a child's health care plan including:

- The medical condition, its triggers, signs, symptoms and treatments
- The pupil's resulting needs, including medication (dose, side effects and storage) and other treatments, time, facilities, equipment, testing, access to food and drink where this is used to manage their condition, dietary requirements and environmental issues, e.g. crowded corridors, travel time between lessons
- Specific support for the pupil's educational, social and emotional needs. For example, how absences will be managed, requirements for extra time to complete exams, use of rest periods or additional support in catching up with lessons, counselling sessions
- The level of support needed, including in emergencies. If a pupil is self-managing their medication, this will be clearly stated with appropriate arrangements for monitoring
- Who will provide this support, their training needs, expectations of their role and confirmation of proficiency to provide support for the pupil's medical condition from a healthcare professional, and cover arrangements for when they are unavailable
- Who in the school needs to be aware of the pupil's condition and the support required
- Arrangements for written permission from parents and the Head Teacher for medication to be administered by a member of staff, or self-administered by the pupil during school hours
- Separate arrangements or procedures required for school trips or other school activities outside of the normal school timetable that will ensure the pupil can participate, e.g. risk assessments
- Where confidentiality issues are raised by the parent/pupil, the designated individuals to be entrusted with information about the pupil's condition
- What to do in an emergency, including who to contact, and contingency arrangements

7. Managing medicines

Prescription and non-prescription medicines will only be administered at school:

- When a medical professional has indicated this is required in a health care plan **and**
- Where we have parents' written consent

The school will only accept prescribed medicines for children with a health care plan. Medicines must be:

- In-date
- Labelled
- Provided in the original container, as dispensed by the pharmacist, and include instructions for administration, dosage and storage

The school will accept insulin that is inside an insulin pen or pump rather than its original container, but it must be in date.

All medicines will be stored safely. Medicines and devices such as asthma inhalers, blood glucose testing meters and adrenaline pens will always be readily available to pupils and not locked away.

Medicines will be returned to parents to arrange for safe disposal when no longer required.

7.1 Controlled drugs

Non-prescribed medicines

School staff will not administer non-prescribed medicines to children. Children must not bring their own medicines to school. Any medicines found with children will be removed and locked in a secure storage and returned to parents as soon as is convenient.

Prescribed medicines

Antibiotics

School staff will not administer antibiotics in school. If a child has been prescribed a dose of 3 times per day or less this can be managed by the parent outside of the school day.

If children have been prescribed a dose of more than 3 times a day, the parent will be asked to come to school to administer any medicine required in school time. School will not store these medicines as parents should maintain full responsibility for them.

Inhalers

A child with asthma may have inhaler(s) which may need to be used regularly or before exercise, or when the child becomes wheezy.

Most commonly, blue salbutamol inhalers ("relievers") are used to relieve symptoms and brown steroid inhalers ("preventers") are used to prevent exacerbations and control the severity of the illness.

Inhalers in school are clearly labelled with the child's name and are stored centrally in each classroom. The dates on the inhalers are checked termly to ensure they are all still in date. Children are given the opportunity to use their inhalers when needed and a record of this is taken and sent home to parents on the same day.

Inhalers are very safe and it is unlikely that a child using another child's inhaler is likely to come to any harm (although obviously medicines should only really be used by those that they have been prescribed for).

Other medicines

Only medicines which a child could not manage in school without having e.g. medications for ADHD, will be managed on a case by case basis and given by a member of staff. Staff will be named in the child's individual care plan and will understand from a health care professional and parents, how to administer the correct dosage of such medicines.

7.2 Pupils managing their own needs

Pupils who are competent will be encouraged to take responsibility for managing their own medicines and procedures. This will be discussed with parents and it will be reflected in their individual healthcare plan.

Pupils will be allowed to carry their own medicines and relevant devices wherever possible. Staff will not force a pupil to take a medicine or carry out a necessary procedure if they refuse, but will follow the procedure agreed in the healthcare plan and inform parents so that an alternative option can be considered, if necessary.

7.3 Unacceptable practice

School staff should use their discretion and judge each case individually with reference to the pupil's healthcare plan, but it is generally not acceptable to:

- Prevent pupils from easily accessing their inhalers and medication, and administering their medication when and where necessary
- Assume that every pupil with the same condition requires the same treatment
- Ignore the views of the pupil or their parents
- Ignore medical evidence or opinion (although this may be challenged)
- Send children with medical conditions home frequently for reasons associated with their medical condition or prevent them from staying for normal school activities, including lunch, unless this is specified in their healthcare plan
- If the pupil becomes ill, send them to the school office or medical room unaccompanied or with someone unsuitable
- Penalise pupils for their attendance record if their absences are related to their medical condition, e.g. hospital appointments
- Prevent pupils from drinking, eating or taking toilet or other breaks whenever they need to in order to manage their medical condition effectively
- Require parents, or otherwise make them feel obliged, to attend school to administer medication or provide medical support to their pupil, including with toileting issues when this need has been identified by a medical professional in the individual healthcare plan. No parent should have to give up working because the school is failing to support their child's medical needs
- Prevent pupils with a healthcare plan from participating, or create unnecessary barriers to pupils participating in any aspect of school life, including school trips, e.g. by requiring parents to accompany their child
- Administer, or ask pupils to administer, medicine in school toilets

8. Emergency procedures

Staff will follow the school's normal emergency procedures (for example, calling 999). All pupils' individual healthcare plans will clearly set out what constitutes an emergency and will explain what to do.

If a pupil needs to be taken to hospital, staff will stay with the pupil until the parent arrives, or accompany the pupil to hospital by ambulance.

9. Training

Staff who are responsible for supporting pupils with identified medical needs will receive suitable and sufficient training to do so.

The training will be identified during the development or review of healthcare plans with the advice of a medical professional. Staff who provide support to pupils with medical conditions will be included in meetings where this is discussed.

The relevant healthcare professionals will lead on identifying the type and level of training required and will agree this with the Head Teacher or SENCo. Training will be kept up to date.

Training will:

- Be sufficient to ensure that staff are competent and have confidence in their ability to support the pupils
- Fulfil the requirements in the child's healthcare plan.
- Help staff to have an understanding of the specific medical conditions they are being asked to deal with, their implications and preventative measures

Healthcare professionals will provide confirmation of the proficiency of staff in a medical procedure, or in providing medication.

All staff will receive training so that they are aware of this policy and understand their role in implementing it, for example, with preventative and emergency measures so they can recognise and act quickly when a problem occurs. This will be provided for new staff during their induction.

10. Record keeping

The governing board will ensure that written records are kept of all prescribed medicine administered to pupils with an individual healthcare plan.

Parents will always be informed if their child has been unwell at school.

Individual healthcare plans are kept in a readily accessible place which all staff are aware of.

11. Liability and indemnity

The governing board will ensure that the appropriate level of insurance is in place and appropriately reflects the school's level of risk.

The policy number is P23CASLFG00005

1 Apr 2023 - 31 Mar 2024

Maven Public Sector on behalf of XL Catlin Insurance Company Limited and Aviva Insurers Limited

Maven Public Sector is a trading name of Aon UK Limited

12. Complaints

Parents with a complaint relating to the school's management of their child's medical condition should discuss these directly with the Head Teacher, Mrs Beaumont in the first instance. If the Head Teacher cannot resolve the matter, they will direct parents to the school's complaints procedure.

13. Monitoring arrangements

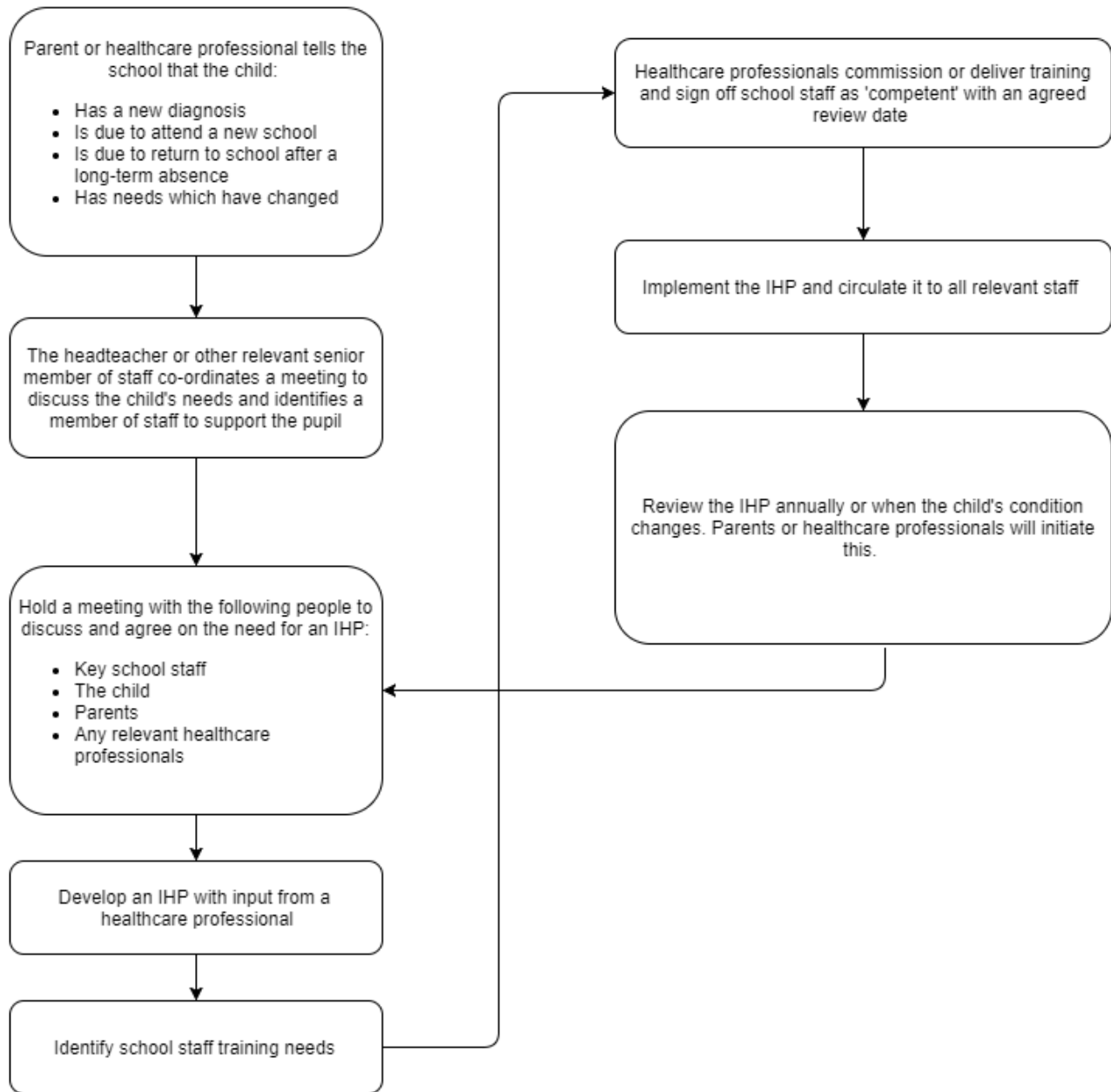
This policy will be reviewed and approved by the governing board annually or when changes occur.

14. Links to other policies

This policy links to the following policies:

- Accessibility plan
- Complaints
- Equality information and objectives
- First aid
- Health and safety
- Safeguarding
- Special educational needs information report and policy

Appendix 1: Being notified a child has a medical condition



IHP refers to Individual Healthcare plan, sometimes known as a healthcare plan.

When should my child return to school?



| | | | | | |
|---|---|---|---|--|---|
| Chicken Pox When all spots have crusted over | Conjunctivitis None* | Diarrhoea & Vomiting 48 hours from last episode | Glandular Fever None* | Hand, foot & mouth None* | Impetigo When lesions are crusted & healed or 48 Hours after commencing antibiotics |
| Measles or German Measles 4 days from onset of rash | Mumps 5 days from onset of swelling | Scabies After first treatment | Scarlet Fever 24 hours after commencing antibiotics | Slapped Cheek None* | Whooping Cough 48 Hours after commencing antibiotics |
| Flu Until recovered | Head Lice None* | Threadworms None* | Tonsillitis None* | | |



This information is based on the [Public Health Agency guide - full copy here](#)

*No need to stay off but school or nursery should be informed.

